

## MLS Area 6

## Residential Statistics



October 2021

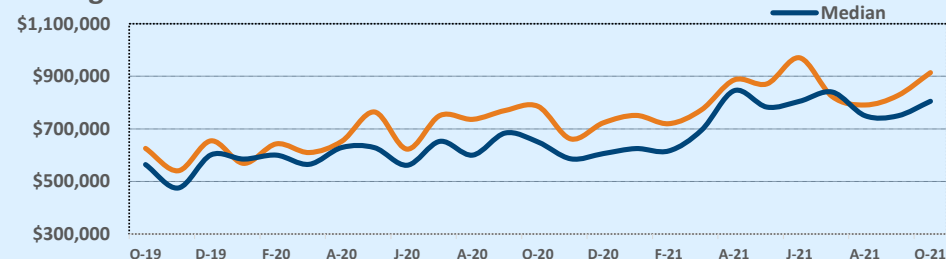
Listings	This Month			Year-to-Date		
	Oct 2021	Oct 2020	Change	2021	2020	Change
Single Family Sales	23	37	-37.8%	326	305	+6.9%
Condo/TH Sales	20	16	+25.0%	273	223	+22.4%
<b>Total Sales</b>	<b>43</b>	<b>53</b>	<b>-18.9%</b>	<b>599</b>	<b>528</b>	<b>+13.4%</b>
New Homes Only	2	9	-77.8%	64	81	-21.0%
Resale Only	41	44	-6.8%	535	447	+19.7%
Sales Volume	\$39,300,093	\$41,642,049	-5.6%	\$496,051,254	\$367,978,026	+34.8%
New Listings	56	82	-31.7%	653	782	-16.5%
Pending	--	--	--	--	--	--
Withdrawn	2	8	-75.0%	22	71	-69.0%
Expired	2	8	-75.0%	22	71	-69.0%
Months of Inventory	1.3	2.8	-52.8%	N/A	N/A	--

Average	This Month			Year-to-Date		
	Oct 2021	Oct 2020	Change	2021	2020	Change
List Price	\$894,195	\$798,361	+12.0%	\$797,026	\$709,881	+12.3%
List Price/SqFt	\$551	\$456	+20.9%	\$516	\$432	+19.2%
Sold Price	\$913,956	\$785,699	+16.3%	\$828,132	\$696,928	+18.8%
Sold Price/SqFt	\$577	\$452	+27.6%	\$539	\$426	+26.5%
Sold Price / Orig LP	103.6%	99.1%	+4.5%	104.5%	98.7%	+5.9%
Days on Market	18	50	-63.2%	28	40	-30.7%

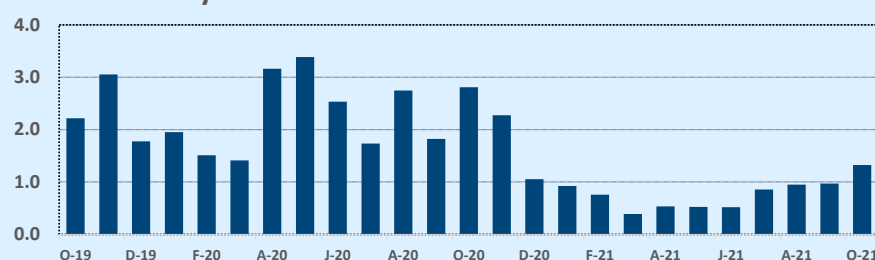
Median	This Month			Year-to-Date		
	Oct 2021	Oct 2020	Change	2021	2020	Change
List Price	\$775,000	\$640,000	+21.1%	\$725,000	\$625,000	+16.0%
List Price/SqFt	\$474	\$457	+3.7%	\$481	\$416	+15.5%
Sold Price	\$805,000	\$650,000	+23.8%	\$755,000	\$615,000	+22.8%
Sold Price/SqFt	\$507	\$443	+14.3%	\$504	\$408	+23.6%
Sold Price / Orig LP	100.0%	99.5%	+0.5%	100.8%	99.2%	+1.6%
Days on Market	8	28	-71.4%	6	17	-64.7%

Price Range	This Month			Year-to-Date		
	New	Sales	DOM	New	Sales	DOM
\$149,999 or under	--	--	--	--	--	--
\$150,000- \$199,999	--	--	--	8	5	42
\$200,000- \$249,999	1	1	6	18	24	50
\$250,000- \$299,999	--	1	9	38	30	10
\$300,000- \$349,999	3	3	6	37	30	18
\$350,000- \$399,999	2	--	--	29	24	16
\$400,000- \$449,999	1	1	3	17	20	17
\$450,000- \$499,999	1	2	22	16	21	18
\$500,000- \$549,999	2	2	9	14	18	32
\$550,000- \$599,999	1	--	--	20	14	27
\$600,000- \$699,999	7	5	14	74	70	32
\$700,000- \$799,999	7	6	32	97	74	15
\$800,000- \$899,999	10	8	15	58	77	27
\$900,000- \$999,999	7	3	6	56	32	51
\$1M - \$1.99M	10	8	18	140	140	34
\$2M - \$2.99M	4	3	53	26	20	24
\$3M+	--	--	--	5	--	--
<b>Totals</b>	<b>56</b>	<b>43</b>	<b>18</b>	<b>653</b>	<b>599</b>	<b>28</b>

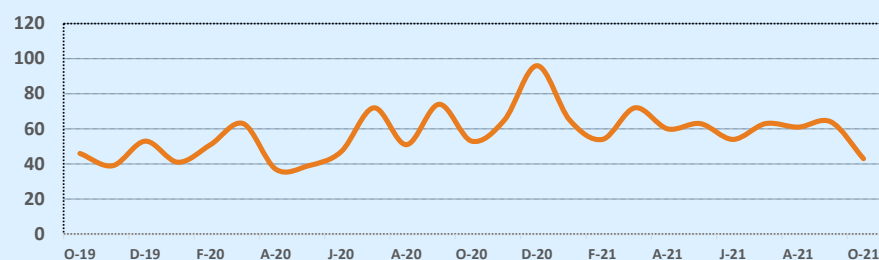
Average & Median Sales Price - Last Two Years



Months of Inventory - Last Two Years



Number of Sales - Last Two Years



Based on information from the Austin Board of REALTORS® (alternatively, from ACTRIS). Neither the Board nor ACTRIS guarantees or is in any way responsible for its accuracy. The Austin Board of REALTORS®, ACTRIS and their affiliates provide the MLS and all content therein "AS IS" and without any warranty, express or implied. Data maintained by the Board or ACTRIS may not reflect all real estate activity in the market.